



Hacknowledge



What is Hacknowledge ?

Hacknowledge is a Swiss security monitoring solution that will help you shorten the time between breach and detection.

Our service is built on experience and intelligence gained from more than a decade of penetration test and mitigating advanced threats

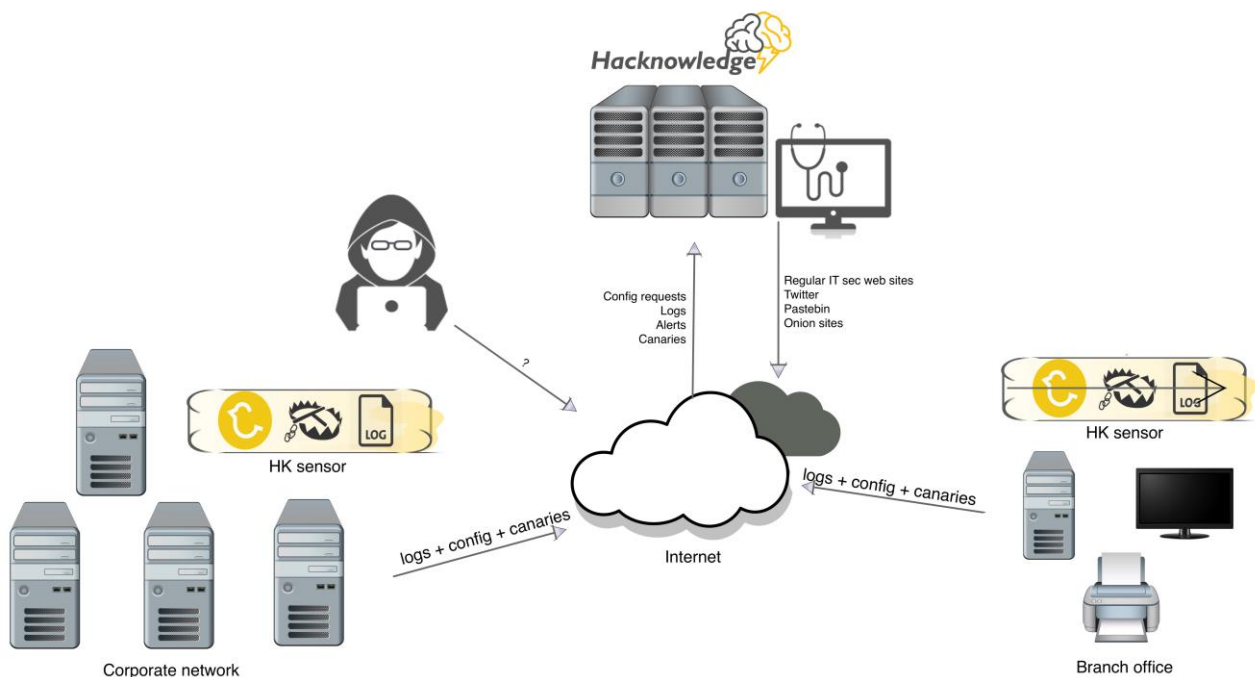
An Innovative Approach



Searching the logs to find security issues is about as close a scenario to finding a needle in the haystack. This is why we will leverage the use of your existing security devices and fortify your logs with strong indicators of compromise generated by our custom sensors. Those sensors installed on your network give our security analysts the visibility they need to assess network anomalies, track trends and detect threats before they do harm.

Finally, our experts will provide unique insights that machines lack. Before being sent to you, each alert is validated and analyzed by our security-experts who will also provide you with advices to help you mitigate the threat.

Hacknowledge Services Diagram





FULL MANAGED SERVICE

- Update & monitoring of the sensors
- Professional advice
- Reporting

Bringing value to your team



SWISS SOLUTION

- Swiss company
- Swiss resident employees
- Swiss data-center

No data crossing the borders



CUSTOM SENSORS

- Available as hardware-appliances or virtual machines.
- Each sensor is a unique blend of:
 - Log collector
 - Managed IDS linked to threat intelligence
 - Honeypots & canaries
 - Vulnerability assessment
- Full control of our solution, no 3rd parties products involved

Simple, Cost effective, generating strong IOC



AS MANY SENSORS AS YOU NEED

- Fully managed cost effective sensors
- Possibility to monitor each branch-office, remote location, subnet...
- As close as possible to the logs and threats sources

Full coverage & lower the number of false positives



ALERTING WITH EXPERT INSIGHTS

- Each alert is validated and analyzed by our experts
- Advice to help you mitigate the threat (monthly pack of hours)

You can focus on what is really important for your business



THREAT INTELLIGENCE

- 24/7 monitoring of specific sources :
- Pastebin
- Twitter
- Github
- Onion web sites

Know your enemy, monitor your company exposure on the Internet



RECURRENT SECURITY REPORTING INCLUDING

- Management summary
- Summary of latest alerts & vulnerabilities affecting your company
- Summary of the company exposure on the Internet

Give your management the visibility they need



REAL-TIME SECURITY DASHBOARDS

- Possibility to search and exploit your logs
- Real-time alerts & trends

Always up to date



Contact :

Hacknowledge SA ,
Av Paderewski 30A
1110 Morges Switzerland

Tel : +41 76 397 64 01

Website: www.hacknowledge.ch

Email: info@hacknowledge.ch